



A Different Perspective

Annual Report

2019



***Heart Havens empowers
adults with a
developmental disability
to live and thrive
in their community.***

The bottom half of the page features decorative red curved lines. A thin red line starts from the left edge and curves downwards towards the right. Below it is a thick, solid red band that also curves downwards from left to right. At the very bottom, another thin red line follows a similar downward curve from left to right.

(inside cover) Chris from Mary Beth Graff and a Heart Havens volunteer.

A Different Perspective



Darlene smiles in front of an artwork series she painted.

Some view those with disabilities as helpless victims of misfortune. Others see a hero when a person with a disability "overcomes their disability" by doing something rather ordinary like going to work.

For years, many people with a disability ranging from mild to severe were placed in a life-long institutional settings which were often restrictive, overcrowded and devalued the individual. Even as society has moved toward incorporating people with a disability into the community and some societal barriers were removed through the Americans with Disabilities Act, there is much more to do.

Today, people with a disability still struggle with inclusion. Too often, our communities define them by their disability instead of as a person with a variety of strengths and weaknesses, like all of us.

Heart Havens believes in a different perspective, that people with a disability should be empowered and supported to be a member of our community. A perspective that looks at people not as heroes or victims but as simply, people. People that should be treated with kindness and respect. People who should have a voice in their everyday life.

Heart Havens' mission, to empower adults with a developmental disability to live and thrive in their community, can only be achieved in combination with others like you. As friends of Heart Havens, our volunteers, donors, family members, friends or neighbors, you help frame the community perspective to recognize the true value and worth of people with a disability.

From The CEO

Heart Havens' programs provide a vital lifeline to people with a developmental disability, supporting them to explore interests and learn life skills. As I write to you in the Summer of 2020, we are in the midst of the COVID-19 pandemic. In addition to providing critical daily support, employees are adjusting and becoming creative to continue to provide a vibrant and active life- at home. Instead of participating in the activities that the community has to offer, in-home activities are being planned. In the place of in person visits with family and friends, virtual visits are the new normal.

We are now living through a time that is changing our perspective in many ways - from how we get groceries to where we work to how we stay safe. As we live through history, I want to challenge you to also change your perspective on how you view people with a developmental disability by focusing on their gifts and talents, contributions to the community, experiences, and the relationships they build.

Thank you for being a member of the Heart Havens' family. With the support of our donors, volunteers, partners, and Board of Directors, Heart Havens had a great 2019 and was ready for the challenges in 2020!



Jennifer Boyden, CEO, smiles with Charles at a game night event with the Heart Havens Junior Board.'

From Our View

Here is a series of artwork drawn and chosen by Heart Havens residents to represent their viewpoint of their life.



Darlene in Lynchburg painted a view of her home.



Lyvette at Garber Morris made a collage of her favorite things.



Luke at Tate created a flower basket in honor of his mother.



Barry at Mary Beth Graff likes to go fishing on a boat.



Charles at Mary Beth Graff loves to listen to music and sing.

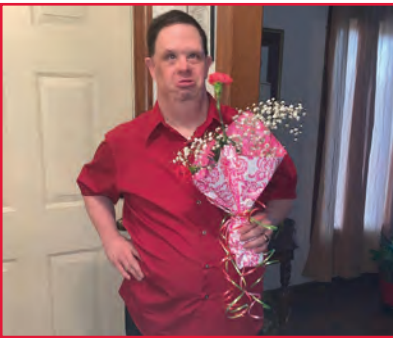


Lilli at Garber Morris made a collage of her favorite things.

Community Inclusion

This year, Heart Havens residents visited a local farm, went to a Halloween party, attended a community production of "Cats," went on a Valentine's Day date, toured the Metro Richmond Zoo, and much more.

(top left) Jean at Bonnie petting a rabbit, (top right) Ladies at Macleigh on the way to a Halloween party, (middle left) Chris before a Valentine's Day date, (middle right) Lynchburg residents at a community theater, (bottom) Ladies at Garber Morris visiting the zoo.



Power of Choice

Heart Havens residents are free to exercise their power of choice in a variety of ways. In their free time, they pursue their individual passions.



Barry at Mary Beth Graff loves history. Along with watching historical documentaries, he likes to visit local historical sites. This summer, he signed up for a historical bus tour through Henrico County.



Thomas at Tate looks forward to basketball season each year. He proudly shows off his uniform. His housemates like to attend the games and cheer for him.



Darlene at Lynchburg loves to make hats on a loom. She had a table at a church fall festival to sell the hats and earn money.

A Donor's Perspective

Take a look from our donor's perspective about why Heart Havens' mission is important to them. We are so thankful to each supporter who gives of their time, talent and resources.



I learned of Heart Havens at about the same time I retired after 43 years of serving children and youth. Heart Havens allows me to continue my ministry to serve people with disabilities, especially those for whom the transition to adult life may be especially challenging. I consider it an honor and a privilege to share my time and financial resources to support Heart Havens' mission to empower adults with development disabilities to live and thrive in their communities. - Dale Pennell

Beth and I helped Methodist churches with building projects, including the Heart Havens Morrison House in Newport News. After that, I joined the Heart Havens Board of Directors, served many years as an Advocate for Heart Havens, and worked as a Direct Support Professional for one year after retiring from building. Beth and I feel blessed by our long time relationship with Heart Havens and continue to support Heart Havens through Shady Grove United Methodist Church and by personally giving financial support. - Dave & Beth Campbell



We are big fans of Heart Havens. As parents of a son who has Down syndrome, our greatest challenge and concern is providing our son with a safe and caring home environment once we can no longer provide that for him. That's what Heart Havens delivers. With their person-centered approach and their well-trained, experienced, and compassionate staff, Heart Havens offers supportive homes that families are looking for. There is a tremendous need for Heart Havens services and we are very proud to support the Heart Havens Team. - Bert & Mary Ramsay (Bert is pictured with son)

A Donor's Perspective cont.

Only through Heart Havens' generous donors can we continue our mission of empowering adults with a developmental disability to live and thrive in their community.



In the late 1960's, our second child was born with Down's Syndrome. This began our journey as we learned about disabilities and the services needed versus available. Our son passed at the age of 43. Prior to his death, we like other similar parents gave a lot of thought to what would happen to him if we passed before he did. As Methodists this led us to Heart Havens. We visited a home and met with the staff in Richmond. We have always been impressed with Heart Havens' approach to the care of persons with a developmental disability. Although our son is no longer with us, we continue to direct our support to Heart Havens. We are glad to be part of helping this wonderful organization fill the needs for families in the Commonwealth. - **Bradley & Mary Chewning**

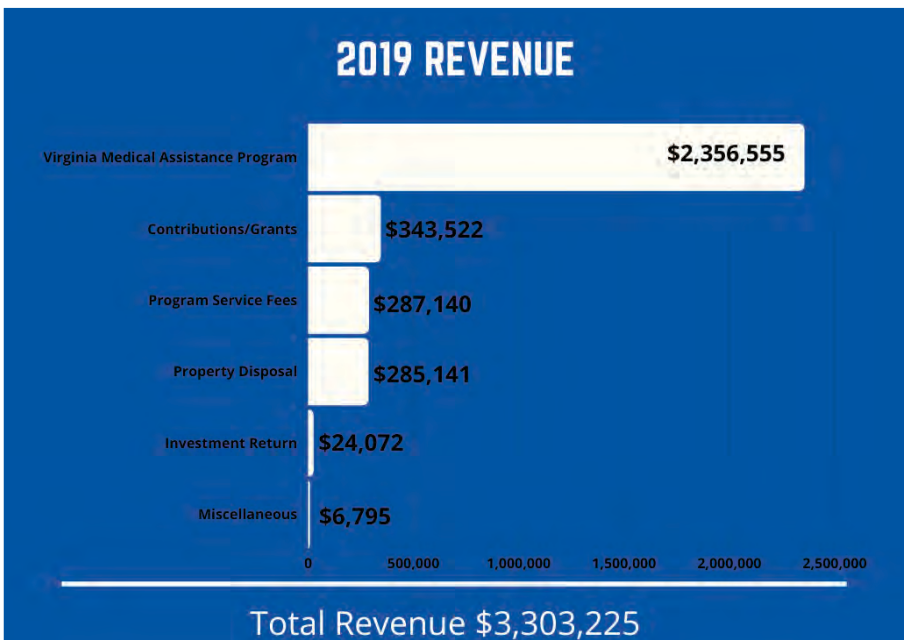
Marilyn and I were first introduced to adults with a developmental disability in the late 1980s. We were present when Heart Havens came into being in the mid-90s and, along with the United Methodist Men, made a commitment to support this amazing ministry of the heart with our time and resources. This ministry has been a major part of our second step giving from the beginning. These amazing people touched our hearts then and continue to touch our hearts today. We are especially excited about the direction of plans to expand services to provide more independent living to a wider client base in the future. Heart Havens continues to touch our hearts and we believe it will touch yours as well. This is a ministry that makes a difference in the lives of others every single day. - **Johnnie & Marilyn Draughon**



Our Revenue

Heart Havens revenue is divided into six main categories. Any revenue above and beyond expenses is retained in the operations budget for future program needs, such as capital repairs, or available for reinvestment into growth opportunities.

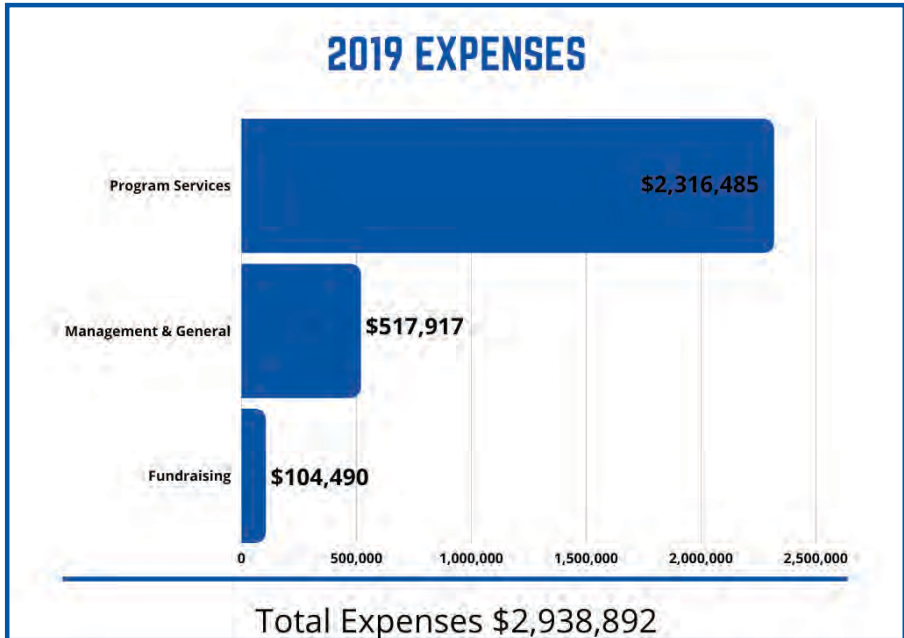
- Virginia Medical Assistance Program - Heart Havens receives the majority of its revenue from the Virginia Medical Assistance Program. Heart Havens residents qualify for a Medicaid waiver that helps cover costs for long-term community based services.
- Contributions and Grants – Heart Havens receives donations from individual donors, churches, community organizations. In addition, Heart Havens receives a variety of grants from private foundations and public charities.
- Program Service Fees –Residents contribute a percentage of their social security income to cover some room and board expenses.
- Property Disposal – This year, we sold the Winchester location, as continued operation was not viable. We made a strategic decision to divert time and resources into planning for the future of Heart Havens.
- Investment Return - Heart Havens has an endowment fund created for the ongoing maintenance of the homes. This fund creates a moderate amount of investment return each year.
- Miscellaneous - Includes credit card rewards and income from the rep payee program.



Our Expenses

Heart Havens' expenses are divided into two main categories: Program Services and Support Services. Program Services involve expenditures that are directly occurring in each of the Heart Havens homes. Support Services includes the supervisory roles and expenses need to ensure that Heart Havens is licensed through the state, operating according to appropriate policies, and providing the best services to residents.

- Program Services which includes home staff salaries, payroll taxes, benefits, training and recruitment; groceries, maintenance and repairs, utilities and telecommunications, education and recreation, computers and office supplies.
- Support Services includes two categories:
 - Management & General – benefits and training, employee appreciation supervisory staff salaries, payroll taxes, office rent, travel expenses, computer and office supplies, legal fees (received as in-kind services)
 - Fundraising – percentage of salaries based on time spent fundraising, marketing materials and print materials, and a percentage of rent, insurances, taxes and office fees.



As good stewards of your generous gifts, each year Heart Havens provides for an independent audit with Pilc & Moseley, LLC, Certified Public Accountants. Copies of our 2019 Audit and Form 990 are available on our website (www.hearthavens.org). They are also published on www.Guidestar.org and www.GiveRichmond.org.

Our Generous Supporters

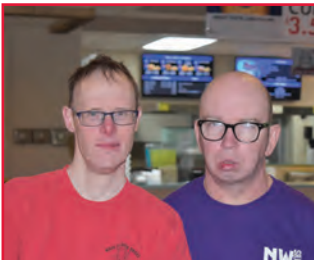
In 2019, Heart Havens received numerous generous grants and contributions. It is this generosity that empowers adults with a developmental disability to live and thrive in their community. Thank you!



Luke & Dennis at Tate playing games



Marshall at Bonnie celebrating his birthday.



Danny (left) and Joey (right) at Saratoga at a Winchester bowling fundraiser event.

Grant & Family Foundation Gifts

Virginia Department of Rail & Public Transportation
\$64,000 for Vehicles

Knights of Virginia (KOVAR)
\$20,000 for Maintenance

Bradley & Mary Chewing
\$5,000 for Operation Expenses

Melvin & Kathleen Bailey
\$2,500 for Operation Expenses

The Randy and Sarah Shangraw Family Fund
\$2,000 for Operation Expenses

James & Virginia Taylor Fund
\$1,200 for Operation Expenses

Gatchell Family Foundation
\$1,000 for Operation Expenses

Noelle and Danette Metcalfe Charitable Fund
\$1,000 for Operation Expenses

Virginia United Methodist Commission on Disabilities
\$700 Maintenance

Names in blue denote members of the Giving Hearts Recurring Gift Program.

Cornerstone Society (\$10,000 +)

Knights of Virginia (KOVAR)
VA Department of Rail & Public Transportation

Guardian Society (\$5,000 +)

Bradley & Mary Chewning

Benefactor Society (\$2,500 +)

Dr. Young Hoon & Lynn Bae

Melvin & Kathleen Bailey
Burke United Methodist Church, Burke
First United Methodist Church, Hampton

Bert Ramsay

Trinity United Methodist Church, Smithfield

Heart Havens Society (\$1,000 +)

Jennifer Boyden
Jonathan Bradshaw
Patricia Chandler
Johnnie & Marilyn Draughon
Duncan Memorial United Methodist Men, Berryville
Enon United Methodist Men, Mechanicsville
Gatchell Family Foundation
Michael Hamway
Kenneth Herman
James & Virginia Taylor Fund
Major Jerome & Carol Lawson
Manor Memorial United Methodist Men, New Market
Noel and Danette Metcalf
Cdr. Frank Mixner
The Randy and Sarah Shangraw Family Fund
Shady Grove United Methodist Men, Mechanicsville
Mildred Stillman
Willie Weigand

Friend (\$500 +)

Patricia Barclay

Beech Grove United Methodist Men, Suffolk

Colonial Beach United Methodist Women, Colonial Beach

Community United Methodist Men, Virginia Beach

Corinth United Methodist Men, Sandston

Covenant United Methodist Men, Chesapeake

Judy & Jim Gardner

Ronald & Martha Hardman

Ivor United Methodist Church, Ivor

Brian Jefferies

Allen & Peggy Langford

Madison United Methodist Men, Madison

Tom Moore

Peace United Methodist Men, Fredericksburg

Dale Pennell

Salem United Methodist Men, Virginia Beach

Thomas D Saunders

Glenn & Rebecca Spain

St. Andrews United Methodist Men, Virginia Beach

Robert Tate

Thalia United Methodist Men, Virginia Beach

Neighbor (\$250 +)

David & Beth Campbell

David Coffie

Calvary United Methodist Church

Lawrence Dickenson

Ebenezer United Methodist Men

Emmanuel United Methodist Church

Fairlington United Methodist Men

Patti Graeff

Timothy & Amy Goodfellow

Kari Hammond

Alice Hickman

David & Joan Hoagland

Neighbor (\$250 +) continued

Rex and Debbie Hockemeyer
Hillcrest United Methodist Church

Col. Terrill & Mary Hope

Tom Hite

Rev. Danny Kesner

Theresa Laine

John & Mary Lock

Frank Macrina

Elizabeth McClung

Anne McNeal

Patricia Mills

New Hope United Methodist Men

Oakton United Methodist Men

Lee & Elizabeth Price

Rodes United Methodist Men

Salem United Methodist Men

William SanSoucie

Shaun Smith

Trinity United Methodist Men

Virginia Credit Union

Wesley United Methodist Men's Fellowship

Barbara Williams

Elizabeth Wilson

Mrs. Vicki Wolz

Michelle Woodard

Woodland United Methodist Women

Heart Havens opened the Elmwood home in Chester at the end of 2019. Thank you to the churches, groups and individuals who helped us renovate the house, decorate the rooms and stock the pantry to get it ready for residents and to transform it from a house to a home!



Patron (\$100 +)

William & Marsha Allen	Reverend R. & Betty Gillis
Tony Almond	Anne Pillow Hamlin
William & F. Arthur	Fredrick Harmeling
Thomas Bailey	W.C. Herbert
Patricia Bell	Herndon United Methodist Church
Bethany United Methodist Church, Monroe	Methodist Men, Herndon
Bethel United Methodist Church, Woodbridge	Dennis & Lea Ann Hough
Bethlehem United Methodist Women, Moneta	Susan Huffaker
Allison Biggs	Marci Huntsman
Debbie Blanton	James & Ashby Judy, Jr
David & Joan Bolyard	Thomas Inge
Kay Burgess	Emmy Isbell
Susan Butler	William & Deborah Iwig
Allen & Rose Broaddus	Brenda Kemp
Brenda Bryant	Thomas King
Centenary United Methodist Women, Lynchburg	Jason & Ivette Kingrey
Robert & Cheryl Chapman	Mario & Joy Carruth Kuhar
Warren & Catherine Curd	Jodie Love
Ernest & Brenda Croxton	Rhett & Mary Anne Lloyd Lowery
Mary Deahl	Julie Lucy
Doreen DeVore	Market Street United Methodist Men, Onancock
Brad Douglas	David & Maude Marshall
Judy Dudley	Peggy Martin
Cheryl Erickson	Darwin & Edna McAfee
Dennis Fairbanks	Memorial United Methodist Women, Virginia Beach
First United Methodist Men - Fox Hill, Hampton	Reverend Gary Monroe
First UMC of Hampton United Methodist Women, Hampton	Harriet Moore
Shirley Fisher	Mt. Pisgah United Methodist Church Men's Group, Mt. Sidney
John Hall	John Nelson
James Gardner	Carl Nichols
	Andrew O'Connor
	John & Pamela Orndorff

Patron (\$100+) continued

Otterbein United Methodist Men,
Harrisonburg

Peggy Packard

David & Georgia Paton

Cecilia Pike

Linda Porter

Bill Puckett

William & Marjorie Pressly, Jr.

Barbara Rackley

Peggy Reid

Joyce Rice

David & Susan Riggs

Robert Rinehart

Nadina Ross

Reverend & Mrs. Donald Seely

Carol Setteducato

Lorraine Shelton

Todd Smith

James & Caroline Sponaugle

Martha Stokes

Acrecia Sulcer

George & Nancy Thompson

William & Joanne Tucker

Barbara Wagner

Wes Wagner

Wesley Chapel United Methodist Men,
Suffolk

Dr. Thomas & Barbara Walker

Charlotte Weilacher

Zion United Methodist Women, Gretna



There are many ways that people in Heart Havens homes stay healthy. Charles, Barry, Chris and Thomas went for a walk at a local park. Some houses have exercise equipment in their home or garage. A few residents belong to local gyms like the YMCA and others like to swim for fitness.

In-Honor Gifts

Jean Bae

Dr. Young Hoon & Lynn Bae

Jim Branscome

Lawrence Dickenson

Luke Broaddus

Allen & Rose Broaddus

Liz Brownie

Gladys Stephens

Carlene, my wife

Frederick Harmeling

Danville & Farmville District Clergy

Denise Bates

Roberta Deah & James Molisee

Mary Deahl

**Jim Gardner, Allura & Matt Kemick,
Emmy & Don Isbell, Mike Gardner,
Terry & Fred Laine**

Judy & Jim Gardner

Lisa Garrison, sister

Patti Graeff

Judy Hall

John Hall

Harmony United Methodist Men

Harmony United Methodist Women,
Hamilton

Ruth Horton

Ms. Kathy Lehman

Pastor Mary Lock

John Lock

Marion Lee Pearre, my friend

Gail Sutcliffe

Connie Nichols

Gwen Johnson

Rev. Douglas Pillow

Kaye Phillips

Fred Rathel

Mr. John Orndorff

Kimberly & Ted Salmon

Lawrence Burian

Chris Shumaker

Acrecia Sulcer

St. Paul United Methodist Men

St. Paul United Methodist Women,
Woodbridge

Rachel Elizabeth Stephens

Foster Lee, Jr.

Janice Tate

Ms. Carol Doty

Teresa

Frances Palmer

Rev. Eric Vaudt

Penelope Radd

**Heart Havens gratefully
acknowledges the generosity of
all our donors.**

While we made every effort to list our donors accurately in this report, errors are still possible. We would appreciate having any errors brought to our attention.

Please call or email Sara Becker at
(804) 237-6097 or sara.becker@hearthavens.org.

In-Memory Gifts

Roberta Deahl & James Molisee

Mary Deahl

Dona Dodd

Beverly Major

Ken Filiatrault

Susan Traylor



Ronnie Fisher

Brenda & Joe Williams

Shirley Fisher

The Randy and Sarah Shangraw Family
Fund

Iva Mullins

Gloria Hale

Joseph L. Gallup, my nephew

Patricia Bell

Donald E. Greig

Roslyn Greig

Jessica Hannin, my daughter

Thomas Bailey

Patricia Johnson

Nadina Ross

Mary Beth Graff

Todd Smith

Mac Croson

Betty Crane

Edna McAfee, my wife

Darwin McAfee

Rev. Jim McClung

Elizabeth McClung

Debbie Miller

Marvin Meadows, Jr.

Lynnhaven United Methodist Church,
Virginia Beach

K. Dane Mills

Patricia Mills

Cdr. Frank Mixner

David A. Paton

Georgia Paton

Rev. C. Douglas Pillow

Court Street United Methodist Church,
Lynchburg

Centenary United Methodist Church,
Lynchburg

Dave & Vickie Shackelford

Centenary United Methodist Women,
Lynchburg

Bill Puckett

Hunton Andrews Kurth LLP

Carolyn Smith

Anne Pillow Hamlin

Sharon Conti

Alice Martin

David Petty, Jr.

Brad Douglas

Cheryl Erickson

Virginia Credit Union League

Virginia Credit Union

Dolly Porter

Jodie Love

Susan Butler

Deborah Painter

In-Memory Gifts *continued*

Billy Rodgers

Margel Ferrell
Allison Biggs
Ashby Judy

Sandra Russell

Denise Powell

Mary Lynn Smith

Richard Callis

Brenda Stewart

Linda Porter

Janice Tate

Robert Tate
Margaret Harris
Ruth Chapter No. 8 Order of the
Eastern Star
The Miller Revocable Trust
Joyce Rice
Peggy Reid
Walter Fadeley
Dr. David Major, DDS
First United Methodist Church,
Hampton
Ethel Hickman

Cliff Tiller

Patricia Robey-Weeden

James Utterback

Kenneth Archibald

Lorraine Vatalaro

Michael Dasovich

Rev. Edward H. Wright

Elizabeth Wright



Johnnie Draughon (left) presents the 2019 Brian Manwiller award to recipient Buck Hodges (right).

Brian Manwiller Award

Our 2019 winner of the Brian Manwiller Award was Buck Hodges. The Brian Manwiller "In HIS Grip" Award goes to a United Methodist Man who has demonstrated outstanding advocacy for people with a developmental disability and volunteerism with Heart Havens.

Buck Hodges has been the driving force behind this relationship from the beginning. His love for Heart Havens and particularly for the residents of the MacLeigh-Holland House in Virginia Beach is reflected in his desire to step up for Heart Havens, whenever asked, no matter the time or circumstance.

While president of the Elizabeth River United Methodist Men, he was engaged in promoting Heart Havens, not just through Oakgrove United Methodist Church, but also through many local men's fellowships within the district. Buck is an ardent supporter of Heart Havens.

Thanks to Your Donations

While each resident does receive Medicaid funding through the Developmental Disability (DD) waiver, this funding only pays for staff support and basic operations of the home. It does not cover major repairs, oversight salaries, and client personal needs. Your donations go toward clothes; food for groceries and dining out; participation in community activities; medical needs like hearing aids, glasses and dental care; and transportation.



(top left) Hunter at Bonnie and DSP Anita together at a holiday celebration, (top right) Melissa at Macleigh coloring at home, (bottom left) Darlene and Phillip enjoying a circus show, (bottom right) Charles and Barry at the 2019 Night to Shine Prom.



A New Perspective

Your support made the successes of 2019 possible for our residents. We are so thankful for all the people that make Heart Havens' mission possible.

We hope that the more you get to know the residents of Heart Havens, the more your perspective will change to be not only friends of Heart Havens but also advocates of the disability community.

Together we move forward with the perspective that everyone should be treated with kindness and respect. Together we will continue to support people with a disability to share their voice and empower them to make choices in their everyday life so that they can thrive in their community.

(Pictured above) Marshall from the Bonnie home at the 2019 Night to Shine Prom.



(above) Christina at the MacleIGH Holland home .

www.hearthavens.org • (804) 237-6097



@HeartHavens



/heart.havens



@HeartHavens

7501 Boulders View Dr, Suite 205
Richmond, VA 23225

